

30 October - Morning: chairpersons: Alegaert, Philips

- 9.00- 9.30 Mathilda Wu (Taiwan): Museums and Psychiatry**
9.30- 10.00 Patrick Allegaert (Gent): The history of psychiatry in Ghent/Belgium: The Museum Dr. Guislain History and works of the Museum Dr. Guislain
10.00- 10.30 Octavian Buda (Bucharest): Crime as a 'psycho-social disease': the Influence of Emil Kraepelin' Eugenics in Eastern Europe
10.30- 11.00 J Michael Phillips (London): Exhibiting Psychiatric Art
11.00- 11.30 Rolf Brüggemann, Gisela Schmid-Krebs (Göppingen): "Shockheaded Peter" from Dr. Heinrich Hoffmann (1809-1894), the psychiatry of childhood and adolescence. A museums approach
11.30- 12.00 Kate Forde (London): Madness & Modernity: Mental illness and the visual arts in Vienna 1900 and Bobby Baker's Diary Drawings: Mental illness and me, 1997-2008

Museums and Psychiatry

Mathilda Wu

The presentation is giving some insight about the thesis I am going finish this year:

"How can museums deal with psychiatry in their exhibitions?"

- Taking the museums which had psychiatric background as research objects.

Mental problems are important issues in modern societies. We should not take it as a taboo or tried to lock "problems" somewhere as before anymore. There are more than fifty psychiatric museums in Europe and most of them were an asylum before. Many of them act like a bridge between the psychiatry and the public, offering their historical expertise in an accessible way.

These museums have different approaches because of their intention and resources.

My thesis is going to discuss the evolution of the ideas about madness within Europe which previously was only documented in fragments. From old times to present, From supernatural belief to psychiatry. Moreover, the development of the past buildings into asylums will be mentioned. I will also summarize the European psychiatric museums in the thesis. (Thank you Dr. Rolf Brüggemann! ☺)

In the last chapter, the current achievement of psychiatric museums and the future possible directions will be discussed by analyzing two museums:

Het Dolhuys (Netherlands) and Museum Dr. Guislain (Belgium).

It will be a great opportunity to gain more knowledge and practical experiences from the experts in the conference since the thesis has not been finalized.

The history of psychiatry in Ghent/Belgium The Museum Dr. Guislain

Patrick Allegaert

The museum of the history of psychiatry, the Dr. Guislain Museum, opened his doors in September 1986. Now 23 years later, we can look back to an interesting evolution and also look forward: we have a lot of plans.

First, who was Dr. Joseph Guislain (1797-1860) ? He was a professor at the University of Ghent, faculty of medicine. He was in our country the pioneer of the so-called 'moral treatment' in collaboration with the at that moment young catholic congregation The Brothers of Charity. At the end of his life, he built in collaboration with the city of Ghent the first asylum (in the modern use of the word) of Belgium (in 1857, the building was finished). The museum is located in this building, which is classified since 2000 as a 'Monument'.

In the first period of the museum (1986-1990) we collected a lot of things for our permanent exhibition: the history of psychiatry, in Ghent, in Belgium, but also in other European countries.

It was a hard task to find objects from early 'therapeutic methods'. A lot of things were disappeared, or was sometimes difficult to find; In 1989 we made a first catalogue: a book with fifteen essays and a lot of photos of the collection.

From 1990 to 1999 the museum made every year a temporary exhibition. The themes of these exhibitions were always related to the history of mental health care (f.e. anorexia nervosa, psychiatry during the Nazi era, children and psychiatry ...).

In 1999 the museum was recognized by the Belgium state/Flanders. We received a subvention. We created more and larger exhibitions, had larger opening hours, received more visitors (40.000 in 2000), worked on broader themes (f.e. outsider art becomes a major topic in our collection and in the exhibitions) and developed more intense international collaboration.

Now, at the end of 2009 we are a well-known museum. We create 4 to 6 exhibitions every year, receive more than 60.000 visitors each year, publish 2 to 4 catalogues every year, and work with a staff of 20 people. The museum plays an important role in the cultural life of Ghent/Flanders.

At this moment we show the exhibition 'From Memory. About knowing and forgetting. From the leaflet of the exhibition: "People remember and people know. But people 'forget' also. *From Memory* deals with the fascination for memory in the worlds of science and art. The exhibition sheds a light on an age-old search: from the medieval art of memory, over the earliest psychological research, to contemporary experiments with artificial intelligence. Artists draw inspiration from memories. *From Memory* presents medieval treatises, old and modern art, photographs and film excerpts. Memory is a manifestation of human potential, memory disease is one of failure. Libraries, encyclopaedias and the internet are all attempts to collect information and thus help our memories. But are they not doomed to failure? Besides, what is dementia and what is an elephantine memory?"

At the symposium in Prague, I will illustrate our history and also speak on our future plans.

Crime as a 'psycho-social disease': the influence of Emil Kraepelin' Eugenics in Eastern Europe

Octavian Buda

Emil Kraepelin is identified as the founder of contemporary scientific psychiatry, as well as of psychopharmacology and psychiatric genetics. Kraepelin believed that psychiatric diseases stemmed from biological and genetic malfunctions. His theories dominated the field of psychiatry at the start of the twentieth century, despite the later psychodynamic incursions of Sigmund Freud and his followers.

In contrast to the fatalistic determinism which characterized his view of mental illnesses as essentially degenerative disorders, his approach to mental hygiene was altogether more positive. While still at Heidelberg, around 1900, Kraepelin formed the opinion that mental illnesses were above all social disorders and his views on the social body politic (*Volkskörper*) are set out in his early paper on '*Crime as a social disease*', in which he extrapolated from his clinical experience and attributed most criminal behaviour to what he called a 'congenitally inferior predisposition'. Like many whose outlook had been formed in the heyday of Bismarck's era, Kraepelin interpreted the disastrous political and military consequences of pan-Germanic nationalism as the result of an unfortunate disease of the body politic which called for prompt treatment and rehabilitation. He later joined the People's Committee for the Rapid Subjugation of England, a body dominated by right-wing members of the academic community. Kraepelin died in 1926 so he was spared from the later Nazi events of the 30s.

A comparative approach to the eugenic thinking in Interwar Romania tries to find out if there are theoretical connections between Kraepelin and the Romanian eugenists.

EXHIBITING PSYCHIATRIC ART

J Michael Phillips

Bethlem Royal Hospital was founded in 1247, making it one of Europe's oldest mental hospitals. Its archives are continuous since 1559. It has been collecting art since 1829, and now has nearly a thousand artworks. We are the only Accredited Museum in Britain which specialises in psychiatric art.

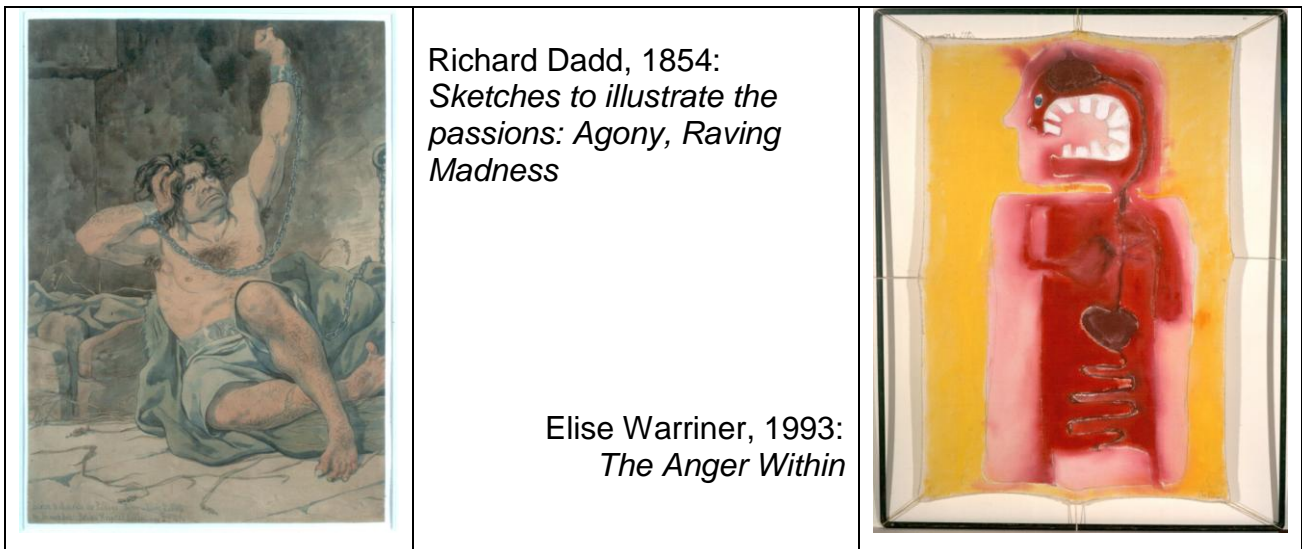
Our role is to educate professionals and the general public in the history of the treatment of mental illness, and to help people to understand mental distress. We have a small staff of five employees, and a very small building. Our problem is that our audiences are now too big for our very restricted facilities.

This presentation will show how we reach larger audiences through our touring exhibitions. In 2003 we had 900 on-site visitors and 5,000 off-site visitors. In 2008 we had 2,400 on-site visitors and 85,000 off-site visitors. Last year we ran 10 off-site exhibitions.

We currently have available: two exhibitions by well-known historic artists; one 19th century photographic exhibition; one Outsider Art exhibition; and one exhibition of psychiatric art 1949-2009. Each exhibition has around 40 artworks. Through our partnership with the Bethlem Gallery we have been able to facilitate exhibitions by emerging artists. All of our

paintings are now on line and we are now able to construct tailor-made exhibitions to suit the borrower.

We have had successes and a few problems. We have learned how to make an exhibition work well and how to make life easier for the borrower. We have also seen how things can go wrong and learned what to avoid. We have been involved in single source exhibitions, partner exhibitions and multiple collaborative exhibitions. Museums are often accused of having large reserve collections rarely seen by the public. In this presentation we aim to show how we have been able to reach much wider audiences than was previously possible.



**„Shockheaded Peter“ from Dr. Heinrich Hoffmann (1809-1894):
Some historical aspects of the psychiatry of childhood and adolescence.
A museums approach.**

Rolf Brüggemann and Gisela Schmid-Krebs

We will present the actual exhibition on this theme in the *MuSeele* (museum of psychiatry in Göppingen, Germany).

The importance of early therapeutical intervention for psychologically disturbed children is recognized although the specialized institutions are few. One of the first psychiatrists who reflected this need was the german doctor Heinrich Hoffmann, who lived in the 19th century and practised in Frankfurt on Main.

He wrote the childrens book „Struwwelpeter“ in which he pointed out some special problems of childhood and adolescence. These topics remain also problems of our time. The terms of diagnosis changed but the facts seem very similiar. The recent amok in Winnenden in Southern Germany again emphasizes the importance of children and adolescent psychiatry. In our actual exhibition we inform the visitor about these problems and the related fields of psychiatry and psychotherapy.

**Madness & Modernity: Mental illness and the visual arts in Vienna 1900
and Bobby Baker's Diary Drawings: Mental illness and me, 1997-2008**

Kate Forde

A brief introduction to two recent exhibitions at Wellcome Collection which considered the subject of mental health from strikingly different perspectives.